

WITH MECHANICAL SEAL
AND SEALLESS

fine thing



DRUM PUMPS STAINLESS STEEL

IF NO CONTAMINATION AND PRODUCT
CARRYOVER IS ALLOWED

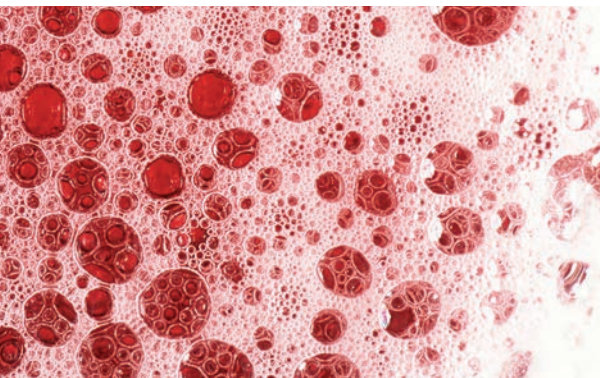


The right pump for

- FOOD
- PHARMACEUTICAL
- BEVERAGE
- COSMETICS

Drum pumps stainless steel with mechanical seal (MS) and sealless (SL)

IF EASY CLEANING, DURABILITY AND EXPLOSION-PROOF ARE REQUIRED



- **PAINTS + COATINGS**
- **SOLVENTS**
- **ACIDS + BASES**
- **SPECIAL APPLICATIONS + PLANT ENGINEERING**

Let us convince you!

The quickest way to get to know us is to contact us directly. Save your precious time.

Contact us and we will do the rest for you.

Consulting service, product selection, project planning assistance and quote – fast and all free of charge.

Advantages

more ...

- practical
- variable
- complete
- hygienic
- solid
- robust
- imaginative
- fit for use
- modular
- individual

Sealed and sealless pumps types have grown closer to one another

The SD (Simple Disassembly) series is sealed with a mechanical seal (MS). In the SL series (sealless) there is an inner tube in the pump tube. The leakage unit depressurises the inner tube. The drive shaft is running within the inner tube. With no pressure difference between the inner tube and the outside ambient air no liquid can leave the pump, where the drive shaft comes out from the pump head. The pump is therefore always without leakage at the pump head.

Phone +49 60 23 / 96 43 130
info@gruen-pumpen.de

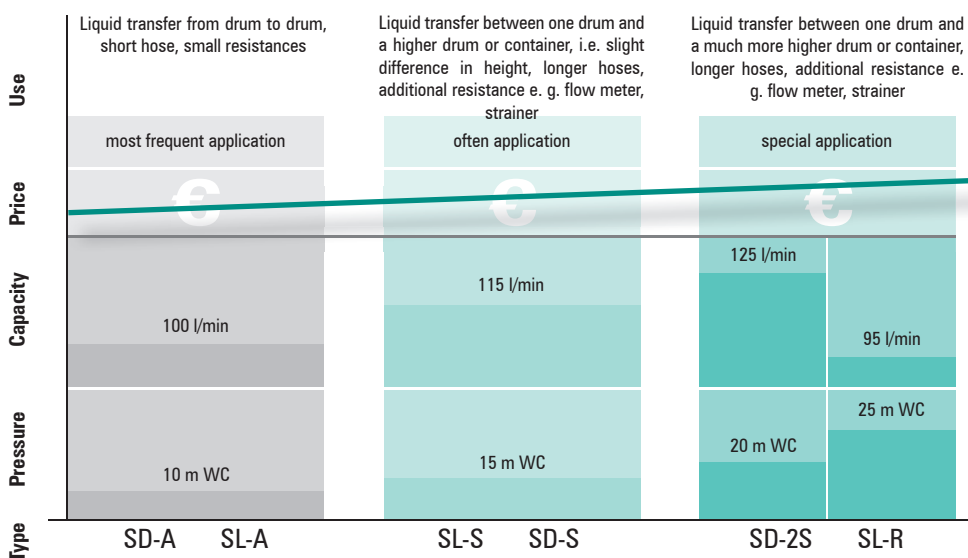


In this booklet you will learn a lot about grün-drum pumps. We are sure you will experience proof of our commitments and product statements when using our equipment.

Online you can learn interesting facts about 'grün-business-philosophy' in a three minute audio slide-show. Worth seeing.


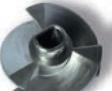




www.gruen-pumpen.de

The right pump for your application



drum pumps stainless steel with features for the top position

DRUM PUMPS STAINLESS STEEL

	Simple Disassembly SD-SS-	A	S	Sealles SL-SS-
What is important for your application				
large capacity		X		
high pressure			X	
viscosity up to 1.500 mPas (pd500)			X	
hydraulic tuning			X	
many different liquids				X
mixing function				
simple disassembly (SD)	X			
easy to clean	X			X
explosion proof				
continous work with induction motor			X	
tube length	container size	ord.-no.		
700 mm	hobcock 30l	631-0001	631-0006	
1000 mm	drum up to 220 l	631-0002	631-0007	
1200 mm	IBC up to 1000 l	631-0003	631-0008	
> 1200 mm	special container	on demand	on demand	
electrical motors without explosion proof				
p310 optimised in price	preferred combination	X		
p400 the ideal drive	improved hydr. performance	X	X	
pd500 silent worker	smooth product treatment		X	
electrical motors with explosion proof				
EX700 for hazardous locations	safety by power	X	X	
pd500 Ex	smooth product treatment		X	
compressed air motor for all applications				
d600 for hazardous locations	the power drive	X	X	



A R S			Mixring Pump Sealless MP-SL-SS- A R S			Magnetic Drive Mag-SS- A R			
X				X				X	
	X	X			X	X			X
		X				X			
	X	X			X				
			X				hermetically sealed		
			X						
			X 				no		
		X				X			

	ord.-no.			ord.-no.			ord.-no.	
691-0001	696-0001	691-0006		691-0011	696-0011	691-0016	631-0021	636-0021
691-0002	696-0002	691-0007		691-0012	696-0012	691-0017	631-0022	636-0021
691-0003	696-0003	691-0008		691-0013	696-0013	691-0018	631-0023	636-0021
on demand	on demand	on demand		on demand	on demand	on demand	on demand	on demand

X				X			X	
X	X	X		X	X	X	X	X
		X				X		
X	X	X		X	X	X		
		X				X		
X	X	X		X	X	X		

Drive motors, select the best drive for every

p310 optimized in price



p400 the ideal drive



properties

short and occasional use,
it likes light and thin liquids,
internal cooling

big resources in power
and durability,
works quickly and saves time,
internal cooling

options

low voltage release (LVR)
recommended according to
EU-directives, speed redu-
cer (SR) varies pressure and
capacity

low voltage release (LVR)
recommended according to
EU-directives, speed reducer (SR)
varies pressure and capacity,
IP54 with TEFC (MA)

data

power (W)	520	
voltage (V)	230	120
protection class	IP24	
LVR*	optional	
SR**	optional	
weight (kg)	3,5	
	type of impeller s. p. 4/5	
max. spec. gravity (kg/l)	A	1,4
max. viscosity (mPas)	250	

power (W)	850	
voltage (V)	230	120
protection class	IP24 / IP54	IP24
LVR*	optional	
SR**	optional	
weight (kg)	4	
	Förderelement s.S. 4/5	
max. spec. gravity (kg/l)	A / R / S	2 / 1,8 / 1,5
max. viscosity (mPas)	A / R / S	800 / 600 / 500

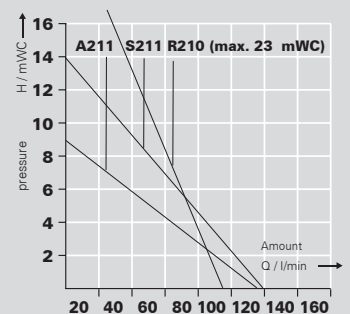
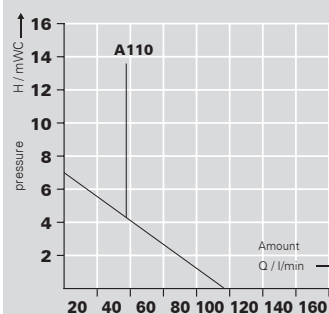
	ord.-no	
with LVR*	500-0016	500-0028
with SR** and LVR	500-0074	500-0060
without LVR	500-0017	500-0029
without LVR with SR	500-0054	500-0057
magnetic clutch , LVR	500-0030	500-0032
magnetic clutch , LVR, SR	500-0061	500-0062
TEFC (MA) IP54		

	ord.-no	
with LVR*	500-0023	500-0025
with SR** and LVR	500-0069	500-0066
without LVR	500-0024	500-0026
without LVR with SR	500-0056	500-0063
magnetic clutch , LVR	500-0034	500-0036
magnetic clutch , LVR, SR	500-0067	500-0068
TEFC (MA) IP54	500-0072	

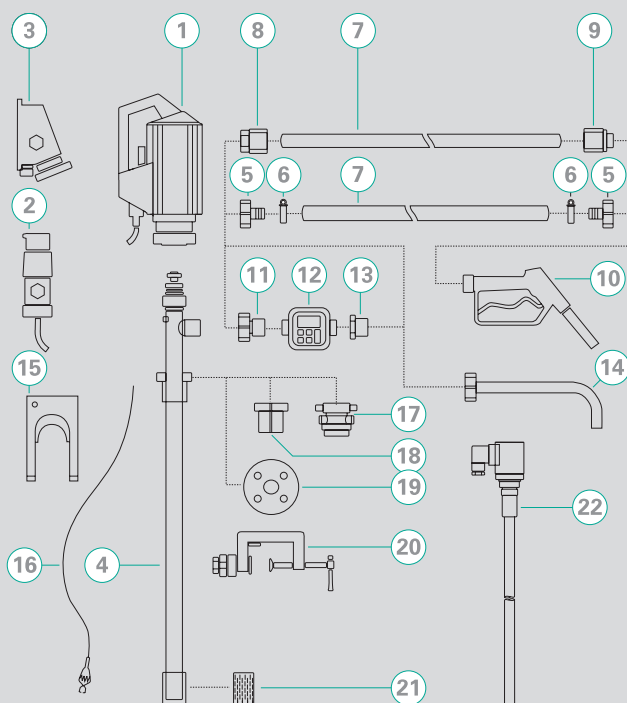
characteristics

* low voltage release
** speed reducer

recommended types



ACCESSORIES



- 1 Drive motor
- 2 Explosion-proof plug
- 3 Explosion-proof socket
- 4 Pump tube
- 5 Hose connector
- 6 Hose clamps
- 7 Hose
- 8 Hose fittings
- 9 Hose fittings
- 10 Nozzle
- 11 Flow meter connection
- 12 Flow meter
- 13 Reducing piece
- 14 Discharge spout
- 15 Wall bracket
- 16 Equipotential bonding cable
- 17 Emission proof drum adapter
- 18 Drum adapter
- 19 Installation flange
- 20 Clamping device
- 21 Foot strainer
- 22 Level switch

Distributor:

grün-pumpen gmbh
Philipp-Reis-Straße 3
D-63755 Alzenau

Phone + 49 (0) 60 23 - 96 43-130

Fax + 49 (0) 60 23 - 96 43-139

info@gruen-pumpen.de

www.gruen-pumpen.de

Handelsregister:
 Amtsgericht Aschaffenburg HRB 15383

Sitz der Gesellschaft: Alzenau

Geschäftsführer:
 Julius Väth, Maximilian Väth

USt-IdNr: DE 160 765 854